

A Touch of Class  
A Touch of Prosperity  
A Touch of Divinity



orchids  
emerald  
—  —

PREMIUM VILLAS & PLOTTING, OPP. INTERNATIONAL AIRPORT, RENIGUNTA



# orchids emerald

PREMIUM VILLAS & PLOTTING, OPPOSITE **TIRUPATI INTERNATIONAL AIRPORT**



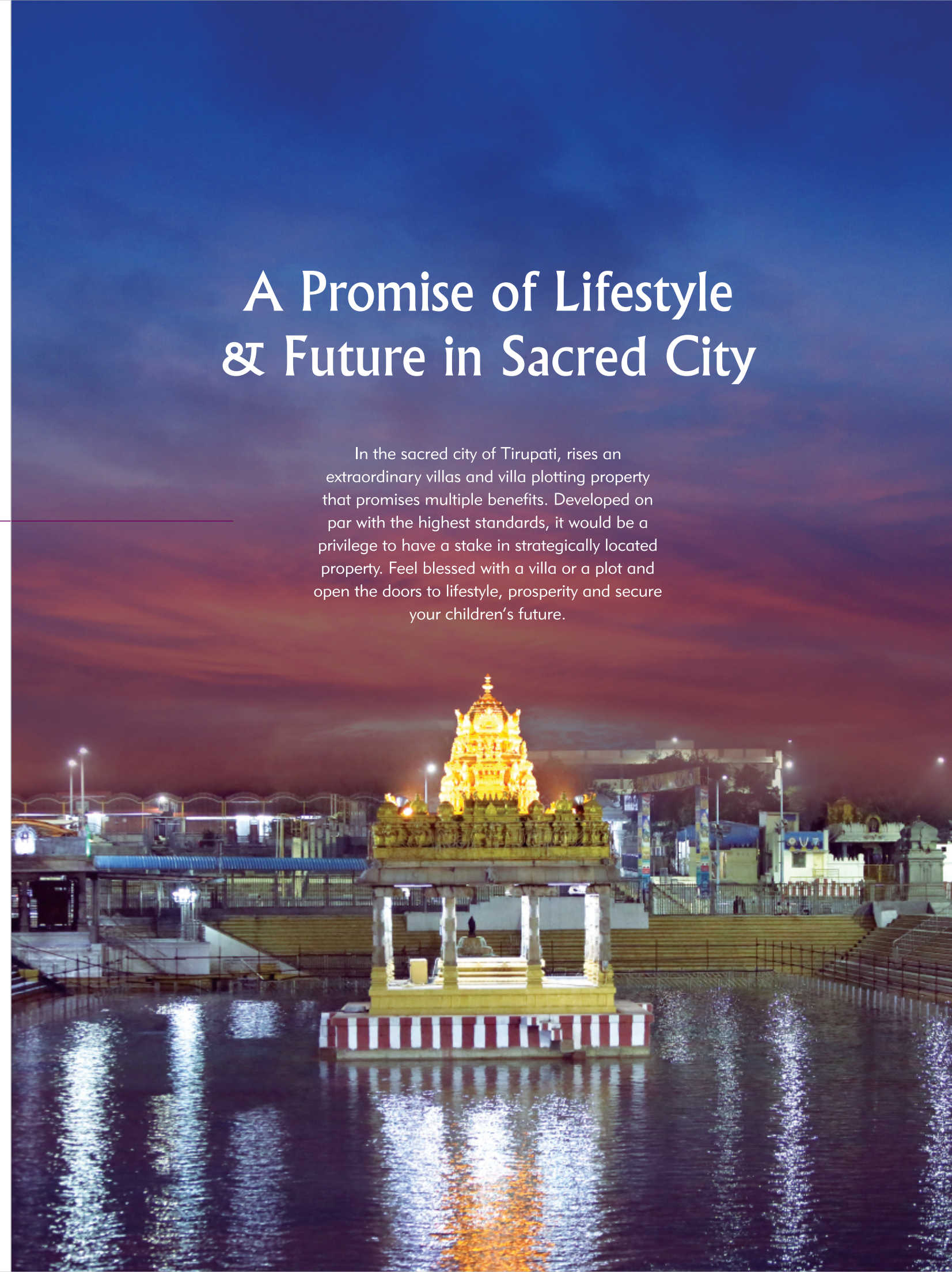
- LUXURY VILLAS
- PREMIUM PLOTS
- RESORT

## A Promise of Lifestyle & Future in Sacred City

In the sacred city of Tirupati, rises an extraordinary villas and villa plotting property that promises multiple benefits. Developed on par with the highest standards, it would be a privilege to have a stake in strategically located property. Feel blessed with a villa or a plot and open the doors to lifestyle, prosperity and secure your children's future.



A PRESTIGIOUS PROJECT BY





Welcome to an Exceptional World



  
orchids  
emerald





## It's Sri Orchids Infra's Promise



Clear Title  
& Legal



Transparent  
Practices



Customer - centric  
Approach



On-time  
Delivery



5 Years Free  
Maintenance



Orchids Emerald is a premium villas and plotting layout that promises to be a golden goose. Is it an opportunity for your dream villa? Or is it a Resort lifestyle? Is it a home-cum-office near your factory? Is it a move that guarantees the future of your children? Or is it your commercial property just opposite an International Airport? The perks with a plot at Orchids Emerald are numerous with pleasant surprises.



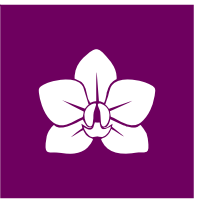


FEATURES THAT MAKE IT ONE-OF-A-KIND

-   
 OPP. TIRUPATI  
 INTL. AIRPORT
-   
 42 MAJOR COMPANIES  
 AROUND THE SITE  
 (NON-POLLUTING)
-   
 FACING 100 FT WIDE  
 4-LANE ROAD
-   
 HI-END  
 AMENITIES
-   
 RESORT &  
 CLUBHOUSE
-   
 TIRUMALA  
 TEMPLE
-   
 HIGH  
 WATER TABLE  
 AT AROUND 60 FT
-   
 3-PHASE  
 UNINTERRUPTED  
 POWER SUPPLY

## Take Lifestyle to Next Level



Orchids Emerald is a meticulously crafted 185 premium villa plots layout with around 40 luxury villas in Phase -1 for those who appreciate the finer things in life. This exclusive development offers a host of amenities ensuring a leisurely lifestyle. From expansive greens and flawless internal roads to top-notch amenities, a grand Resort and clubhouse, every square yard and square foot will exceed your expectations.





Get More than you Asked for

orchids  
emerald

-   
 TUDA APPROVED LAYOUT
-   
 27.8 ACRES OF PRIME VILLA PROPERTY
-   
 185 VASTU COMPLIANT PLOTS IN PHASE-1
-   
 40 LUXURY VILLAS TO CHOOSE FROM IN PHASE-1
-   
 30 - 200 ANKANAM PLOTS
-   
 13 ROAD - FACING COMMERCIAL PLOTS
-   
 ENTRANCE GATE WITH CONTROLLED ENTRY & EXIT
-   
 ALL ROUND COMPOUND WALL
-   
 40 FT WIDE INTERNAL BT ROADS
-   
 AVENUE PLANTATION
-   
 DRIP IRRIGATION TO TREES
-   
 RAIN WATER HARVESTING
-   
 UNDERGROUND CABLING & DRAINAGE
-   
 STREET LIGHTING
-   
 TEMPLE FOR COMMUNITY
-   
 VASTU COMPLIANT
-   
 CLUB MEMBERSHIP WITH A PLOT
-   
 24-HR PROFESSIONAL SECURITY

PROJECT HIGHLIGHTS



\*Images are Only for Conceptual Representation



# A World of Fun in Designer Outdoors



A diverse range of features attracts the residents to outdoors to pursue leisure time. A layout with rich amenities are designed by promoters to give residents a fulfilling life. Be it jogging in morning, sweating it out in outdoor courts or gym, or a leisurely connect with neighbours in seating areas, every moment is actively engaged at Orchids Emerald. Designer landscapes, plenty of plantation and play areas let children blossom in a secure environment. A plot or a villa in Orchids Emerald is indeed a privilege for your family.



## OUTDOORS & SPORTS



BASKETBALL COURT



CRICKET PRACTICE NET



SEATING AREAS



GAZEBOS



JOGGING / WALKING



DESIGNER LANDSCAPING



PARKS & PLAY AREAS



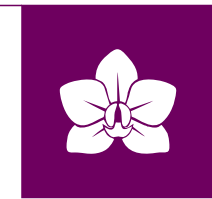
OUTDOOR TENNIS



BADMINTON COURT



AMPHI - THEATER





## RESORT FEATURES

-   
RESORT & CLUBHOUSE
-   
GRAND ENTRANCE LOBBY
-   
RECEPTION & LOUNGE
-   
DOUBLE HEIGHT DINING HALL WITH KITCHEN
-   
MULTIPURPOSE HALL
-   
PERGOLA WITH SEATING PLAZA
-   
SWIMMING POOL WITH KIDS' POOL
-   
AEROBIC / YOGA & MEDITATION HALL
-   
FOREST THEME PLANTATION
-   
BANQUET HALL
-   
MINI GOLF
-   
INDOOR GAMES ENCLAVE
-   
GYMNASIUM
-   
HOME THEATER
-   
GUEST COTTAGES
- AND MANY MORE...**

## Resonate with Exciting Moments

You have both Resort and Clubhouse on a grand scale. Stay fit with jogging and taking gym sessions within the clubhouse. Engage with the community in the rich landscape, which offers a variety of recreation options. Relax as you tee off in mini golf course, play indoor games, give swimming lessons to children, and celebrate parties in the gorgeous multi-purpose hall. Add flavor to your lifestyle at Orchids Emerald.





\*Images are Only for Conceptual Representation.

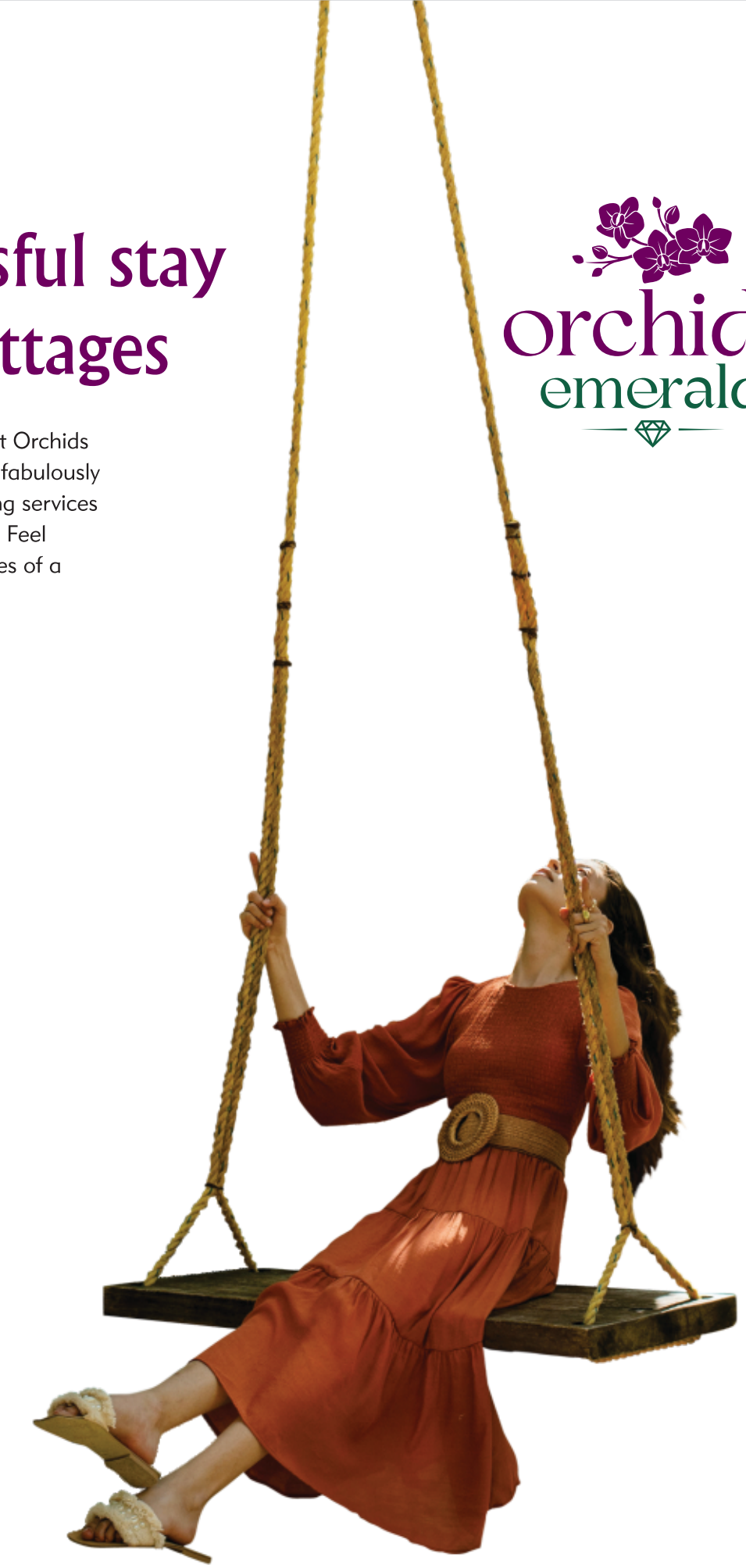


## Experience a blissful stay in Star-quality cottages



Why stay in a hotel when you have luxury cottages at Orchids Emerald? Enjoy the convenience of free boarding at fabulously appointed cottages three times a year. Get pampering services during your stay that let you focus on travel itinerary. Feel ultimate comfort and cherish the pleasant experiences of a lifetime visiting the pilgrim destination.

- Limousine Pick-up & Drop off service from Airport & Railway Station
- 8 Luxury Cottages
- 24-hr Concierge services
- Travel Desk
- Restaurant
- Spacious bedrooms with balconies
- Private courtyards
- Housekeeping services





RESORT & CLUBHOUSE PLAN





1. Main Entrance & Exit
2. Entrance Paving
3. Security Cabin
4. Park Entrance
5. Water Body
6. Seating Plaza with Specimen Trees
7. Reflexology Pathway
8. Feature Wall with Portal Frame
9. Mound
10. Amphitheater
11. Stage
12. Party Lawn
13. Forest Theme Planting
14. Pergola with Seating Plaza
15. Multipurpose Play Court
16. Children Play Area
17. Lawn
18. Pathway
19. Badminton Court
20. Outdoor Gym
21. Elders' Seating
22. Cricket Practicing Net
23. Basketball Court
24. Mini Golf Court
25. Baby Pool (30'x16')
26. Lap Pool (60'x60')
27. Pool Deck
28. Sunken Seating
29. Stepping Stones
30. Water Feature
31. Tropical Planting
32. Specimen Tree
33. Car Parking
34. Planter Box
35. Avenue Planting

LEGEND

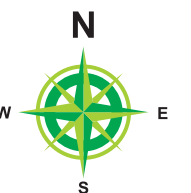


EXISTING 60' WIDE ROAD



## Site Layout Plan

L.P.No:50/2023/1166/TUDA/DPMS





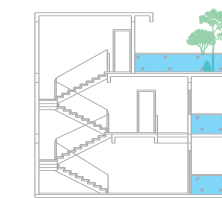
## Want a Tropical Farm House? Leverage the Promoters' Experience

If you are dreaming of a Tropical Farm House in your plot, you can count on promoters' experience in building it for you. Being an NRI or living elsewhere, you can use the promoters' services in building a theme-based Farm House that matches your needs and aspirations. Rest assured you will find a villa built within optimum budgets and timescale at Orchids Emerald.

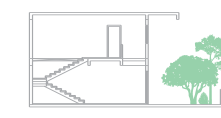
There are around 40 simplex, duplex and triplex villas built by the promoters. Book your villa instead of a plot that suit your interests in sacred city. The promoters' professional experience reflects in the finest floor plans, built spaces with the best brands, quality Interiors in these sprawling villas.



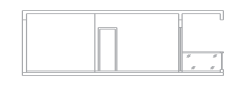
## 40 Villas THE CHOICE IS YOURS!



TRIPLEX



DUPLEX



SIMPLEX



# orchids emerald



Be Blessed  
with a Property

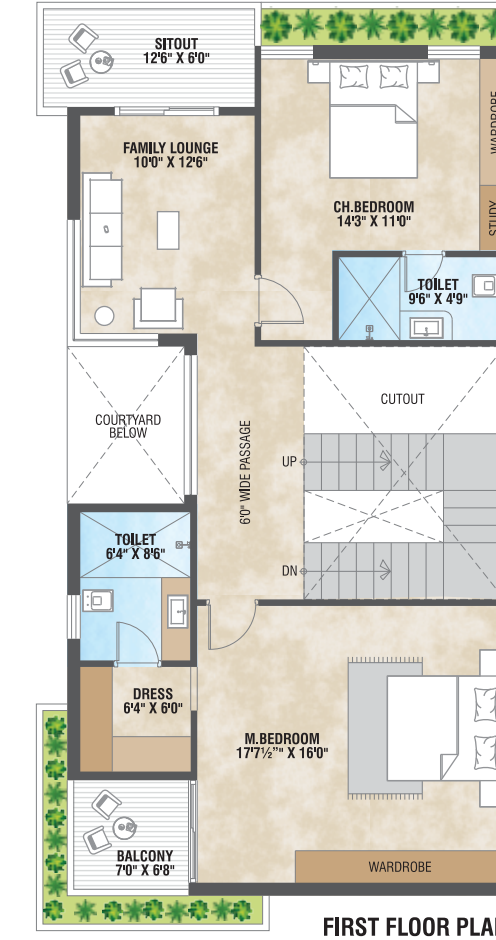
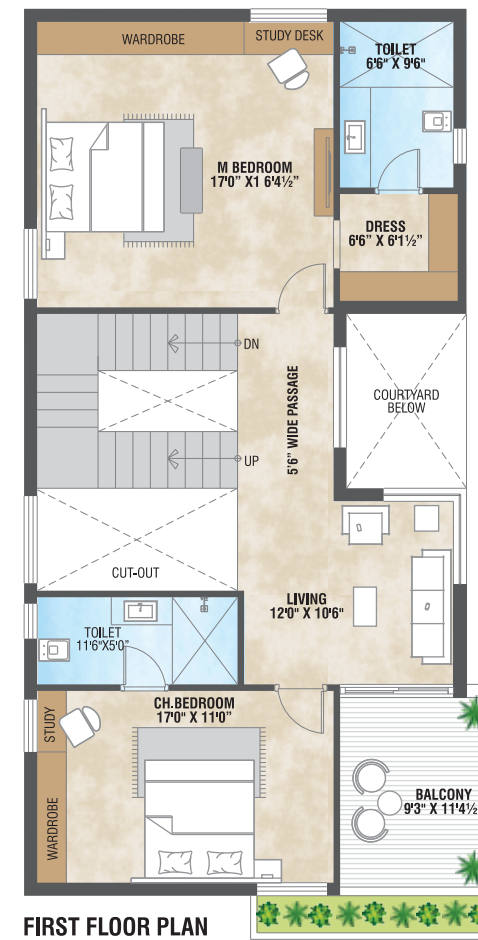
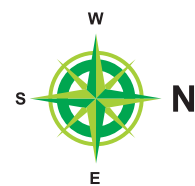
220 Sq.Yds.  
33' X 60'

### AREA STATEMENT

No of Floors	G+1
Ground Floor	1155 Sft
First Floor	1179 Sft
<b>Total Area</b>	<b>2334 Sft</b>

Saleable Area: 2630 Sft

EAST FACING  
VILLA



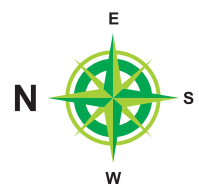
220 Sq.Yds.  
33' X 60'

### AREA STATEMENT

No of Floors	G+1
Ground Floor	1206 Sft
First Floor	1169 Sft
<b>Total Area</b>	<b>2375 Sft</b>

Saleable Area: 2630 Sft

WEST FACING  
VILLA



Tirupati, the Sacred City, is also a 'Smart City' with concerted development initiatives. As airport is expanding for larger aircraft landing, cargo service and maintenance, you have ample opportunities in lucrative commercial enterprise. Orchids Emerald offers more than just a regular home; it's an unbeatable proposition for investment. From reputed schools and corporate medical care to shopping and dining, Renigunta is growing rapidly to merge with Tirupati city. Get a plot or a villa to give your children the security of a bright future.

## Capitalize on Investment

**1<sup>st</sup> Project in Tirupati to offer 80% Loan!**



Orchids Emerald is the FIRST project in Tirupati to benefit from APF (Approved Project Finance) facility. Customers can avail 80% loan amount from all National Banks. You are empowered to realize your plot or villa dream at Orchids Emerald faster than anywhere else.



## A customised APP - Convenience at your fingertips



And Many More Features

The promoters have developed an APP to streamline the community issues of Orchids Emerald. At your fingertips, you can navigate through and sort out Pre and Post-sale issues. Check the availability of plots, book site visits, process legal documents and apply for bank loans - all from the comfort of your couch at home. Make referrals and earn money, stay connected with community over events calendar and scan gallery for latest images. The APP keeps you informed and make application process easy saving time and money.





# orchids emerald

A BLESSED LAND  
WAITING FOR YOU

Kapila Teertham •  
Alipiri Gate •  
Tiruchanur Temple •

20  
MINS

Tirupati Railway Station •  
Bhima's Hotel •  
APSRTC Bus Stand •

15  
MINS

IIT Tirupati •  
IISER (Transit Campus) •  
Sree Rama Engineering College •  
Padmavathi Medical College •

10  
MINS

Renigunta •  
Railway Station •

05  
MINS

TCL •  
Holiday Inn •  
NH No 71 •  
Dixon Technologies •

03  
MINS

60  
MINS • Kanipakam Temple •  
Sri City

40  
MINS • Sri Kalahasti Temple •  
Sri Kalahasti Railway Station



## Your Plot - A Divine Opportunity

Located on 120 ft wide 4-lane road, just across the Tirupati International Airport, Orchids Emerald offers the premium address and an easy access to your office. Orchids Emerald also offers a unique commercial opportunity in a few road-facing plots as the Airport opens avenues to international business.



ACTUAL PHOTOGRAPH FROM SITE

A PRESTIGIOUS PROJECT BY



sri orchids  
INFRA PROJECTS



OWS Building, EMC-II



Wingtech Mobile Communication



Foxlink India Electric



Karbonn



Dixon Technologies



International Institute of Digital Technologies

### Multi-national Industries in 5-10 Mins distance (Non-polluting Electronics companies)



Celkon



APIIC



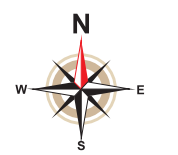
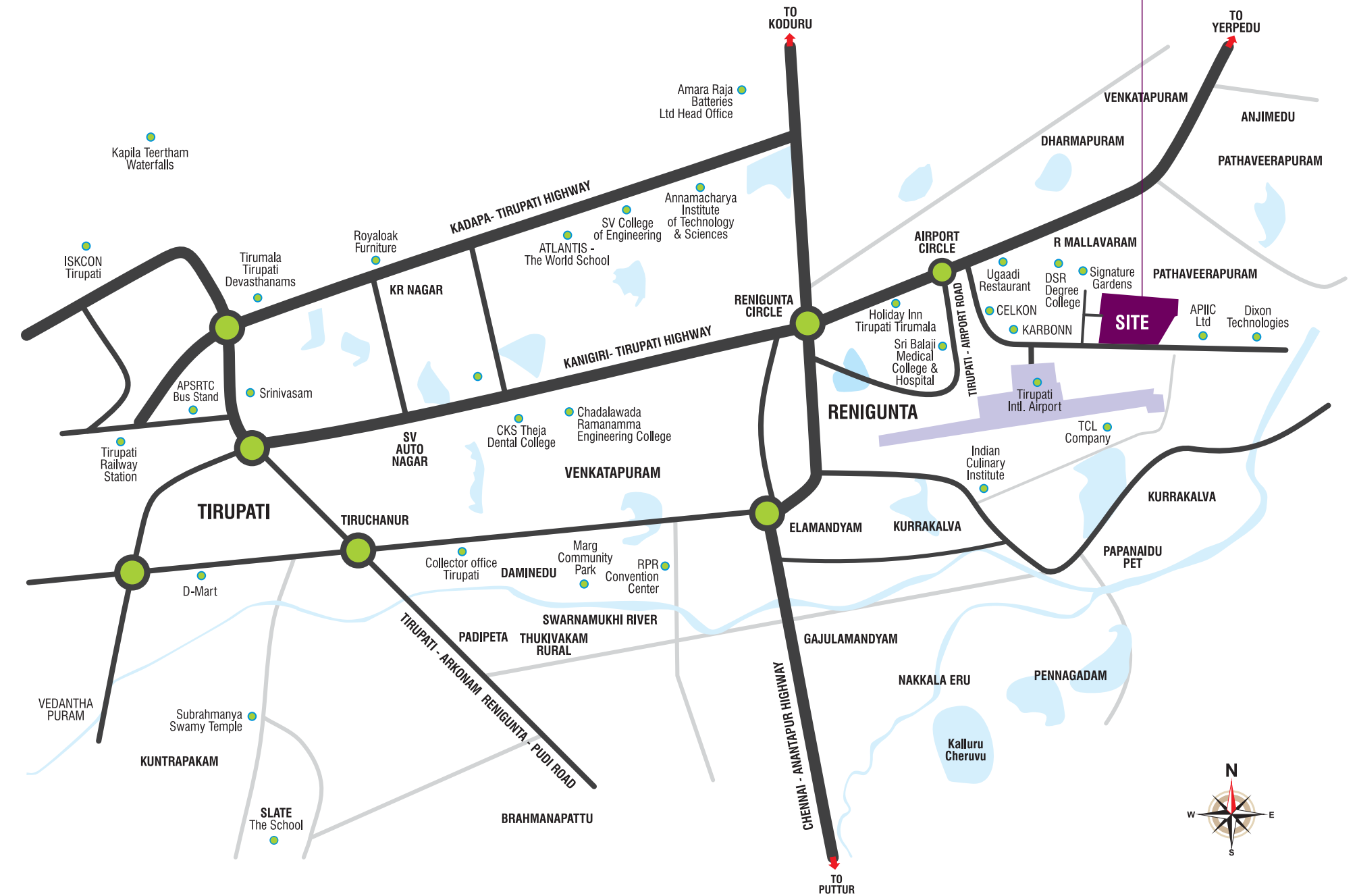
7 Hills Digital Park



Sunny Opotech India

## In The Heart of Happening Tirupati

Renigunta, a suburb of Tirupati is flourishing on account of airport, Industry and pilgrimage. Well connected to all important destinations, Renigunta is now a preferred residential destination for high income communities. The distance between Renigunta and Tirupati is erasing. Your investment in Orchids Emerald will appreciate fast and deliver substantial lifestyle advantages.



LOCATION MAP  
(Not to Scale)





A few decisions you make in life are Memorable.  
A plot or a villa in Orchids Emerald is one of them.



## sri orchids

INFRA PROJECTS

### CORPORATE OFFICE

# Plot No 339, Ground Floor, Road No 23/A, Jubilee Hills  
Hyderabad - 500 033, Telangana

### SITE OFFICE

# Dixon Road, Near Airport, Jinkalmetta Village  
Govindavaram Panchayathi, Yerpedu Mandal  
Tirupati District - 517 520, Andhra Pradesh

✉ [info@orchidsemerald.com](mailto:info@orchidsemerald.com)

🌐 [www.orchidsemerald.com](http://www.orchidsemerald.com)



ARCHITECTS

**IMPACT**  
— architecture studio —

LANDSCAPE ARCHITECTS

**LAND & FORM**

Email: [land8form@gmail.com](mailto:land8form@gmail.com)